

# C300

## V3.0/6 Software Update and Install Notes

*Applicable to upgrades from  
V2.0/16*

### Packing List

Please check that the V3.0/6 Software Upgrade Kit  
(706C30ZK or 706C30CK) contains the following items:

- |   |   |                      |
|---|---|----------------------|
| 1 | V3.0/6 Update Notes   | (This document)      |
| 1 | C300 Software Disk (ZIP)<br>or C300 Software Disk (CF)                          | P96030ZK<br>P96030CK |
| 1 | Sealed Software Licence envelope<br>which contains your Software Licence string | P96032CK             |

*If any of the listed elements are missing, please contact your local SSL  
representative before attempting the upgrade*

*This document contains essential information – please read it carefully  
before making any attempt to upgrade the system*

# Solid State Logic

S O U N D | | V I S I O N

Begbroke, Oxford, England, OX5 1RU • +44 (0)1865 842300

320 West 46th Street, 2nd Floor, New York, NY 10036, USA • +1 (1) 212 315 1111

3700 Wilshire Blvd, Suite 720, Los Angeles, CA 900310, USA • +1 (1) 323 549 9090

3-55-14 Sendagaya, Shibuya-Ku, Tokyo 151-0051, Japan • +81 (0)3 5474 1144

7 bis, rue de la Victoire, le Blanc Mesnil, Paris 93150, France • +33 (0)1 48 67 84 85

Via Timavo 34, 20124 Milano, Italy • +39 (0)39 2328 094

Visit SSL at URL: <http://www.solid-state-logic.com>

© Solid State Logic

All Rights reserved under International and Pan-American Copyright Conventions

C10 HD, C100 HD, C100 HDS, C200 HD, C300 HD, Blackrock, RIO, NetBridge,

**Solid State Logic** and **SSL** are trademarks of Solid State Logic

All other product names and trademarks are the property of their respective owners

No part of this publication may be reproduced in any form or  
by any means, whether mechanical or electronic, without the  
written permission of Solid State Logic, Oxford, England

As research and development is a continual process, Solid State Logic reserves the right  
to change the features and specifications described herein without notice or obligation

E&OE

---

## Introduction

---

This document describes the new features and bug fixes incorporated in V3.0/6 software, and details the software installation procedure required to update your system to this latest release of C300 software.

Please note that this release is only applicable to those systems that have previously been installed with V2.0/16 software. If you have any questions about this release, please contact your local SSL office or distributor.

---

## Software Installation

---

Please carry out the following steps carefully:

1. Check the contents of the Upgrade Kit against the packing list; if there are any omissions, please contact your local SSL office before proceeding further.
2. As with all software installation, we strongly advise you to generate a 'mirror' copy of the C300 System Disk onto Zip *or* Compact Flash disk before proceeding:

### Archiving the System Disk

1. Format a new Zip *or* Compact Flash disk using the **Format** function.
  2. In the **FILE** menu, select **Copy**.
  3. In the resulting pop-up, stab on the large grey box beneath **Source**, which will present a list of the contents of the System Disk at root level; if not, stab the box next to **System** on the left of the pop-up.
  4. Stab on the **Current Dir** box, which will select everything visible on screen (the entire contents of the System Disk). Once done, you will be returned to the **Copy** pop-up, which should now list one source item, the name given to the System Disk.
  5. Stab in the small grey box beneath **Destination**, and stab the box next to **ZIP Disk/Mem Card** on the left of the resulting pop-up. This should display the root-level contents of the Zip *or* Compact Flash disk which, if newly formatted (Step 1.), should display no content.
  6. Stab on the **Current Dir** box, which will select the currently visible level of the Zip *or* Compact Flash disk. Now you will be returned to the **Copy** pop-up, which should list the volume name of the Zip *or* Compact Flash disk as the destination.
  7. Stab **Start Copy** at the foot of the **Copy** pop-up. When the copying process has been completed, stab on the yellow **Copy** box to quit the pop-up and dismount the disk. Remove the Zip *or* Compact Flash disk, label it and store safely.
3. Read carefully the licence agreement that is printed on the label that seals the Software Licence envelope. When you break the seal on this envelope (see later) you will be bound by the conditions in this agreement. The agreement is also printed on the last page of this document. If you do not agree to the terms of the agreement then do not open the package, discontinue the installation process and contact your local SSL representative for advice.

4. Install the new software using the **System / Install** facility:

**Installing new System Software**

1. Place the Software Release Disk in the processor's Zip *or* Compact Flash disk.
  2. Via the **System / Install** menu, and at the prompts, respond accordingly:
    - i. Stab on the **Start** box.
    - ii When instructed **Stab on device to install from**, stab on the **ZIP Disk/Mem Card** box.
    - iii When instructed **Stab on device to copy to**, stab on the **System Disk** box.
    - iv When the screen indicates **Install Completed**, remove the disk from the drive, and then stab on **Reboot** (at the top right of the **Install** pop-up).
  3. Store the software disk in a safe place.
5. When the system has booted, stab on the tablet with the pen and a pop-up will appear on screen inviting you to enable the software. Note that you will not be able to use the console until the Software Licence has been updated.
6. Open the Software Licence envelope containing your licence string and type this carefully using the console's keyboard.
7. Once the system has verified the licence validity, the Software Licence Agreement will appear on-screen. Stab on the **I Agree** box at the top of the pop-up to complete the licensing procedure.
8. Remember to store the Software Licence string in a safe place along with the software disk.

## New Features

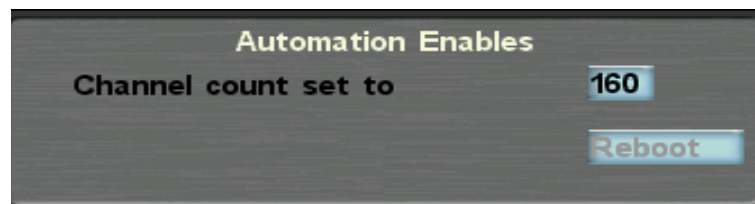
V3 introduces a new feature to optimize the time taken to create a new mix pass when the current mix pass is ended, either via a roll back or from the All Replay command. Prior to V3, 512 channels of automation data were saved in each mix regardless of the actual number of DSP channels in use. A new Automation Setup menu allows the user to enter the number of channels of automation data, which will be saved in a mix. For the majority of console configurations, matching the automation channels to the number of DSP channels set in the DSP user page will significantly speed up the time taken to create a new mix pass and in turn, reduce the waiting time before new automation data can be written.

### AUTO SETUP

The **Auto Setup** menu button is found in **Tools/Config** menu.

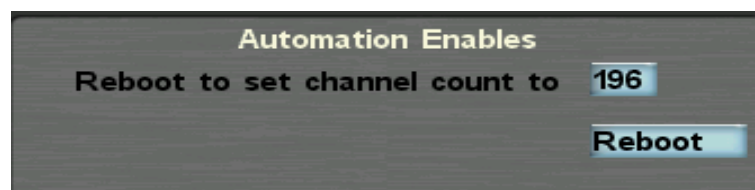


Selecting the **Auto Setup** button activates the Setup menu, which shows the current Automation channel count.



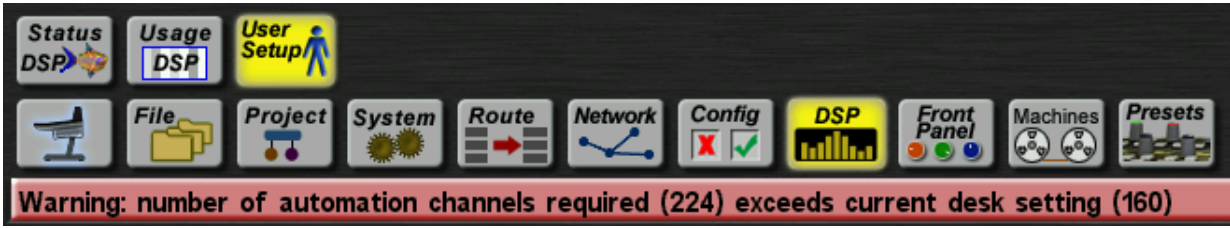
Touching the Channel count box brings up the calculator pop up and a new value can be entered followed by OK, or the Enter key if using the console's Numeric keypad.

At this point the **Reboot** button will be lit.

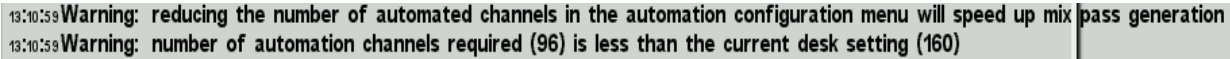


Select **Reboot** to restart the console and to set the number channels stored by the Automation System to the new value.

The Automation channel count is a system setting. If the number of DSP channels in use is changed via the **DSP/User Setup** menu, a red warning will be displayed in the Status Bar at bottom the main screen. This will indicate if the current Automation Channel count is more or less than the Total Channels value in the **DSP/User Setup** menu.

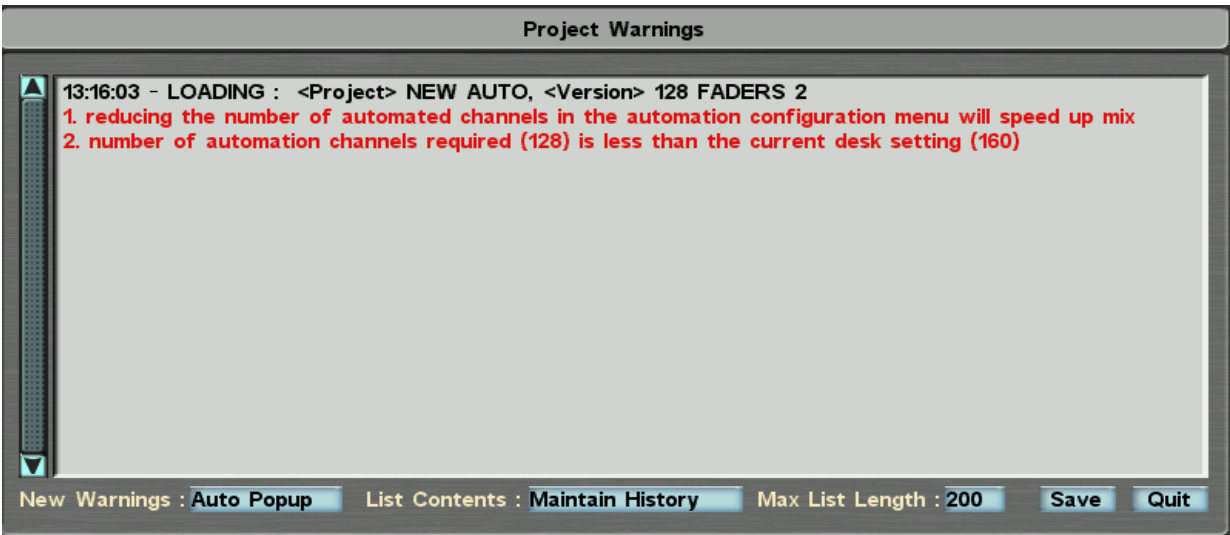


Touching the status bar brings up the Status Log, which will display additional information.



### PROJECT LOAD

When a Project is loaded that sets the number of DSP Channels to a value different to the current Automation Channel count, the **Project Warnings** popup will be displayed.



The Automation Channel count can be changed to match the new DSP channel count via the **Auto Setup** menu as previously described.

## PASSWORD PROTECTION

On installation of V3 software the password protection on the **Spanner** menu will be enabled. To disable password protection:

Press on the **Spanner** menu icon

The QWERTY keyboard will appear

Type the word *edit* <cr>

Enter the default password by typing the word *woodstock* <cr>

Enter new password by typing the word *none* <cr>

Confirm new password by retyping the word *none* <cr>

The **Spanner** menu is now fully accessible.

Should you wish to re-enable the password protection you will need to type the following into the console's terminal window and follow the onscreen instructions:

Open the terminal and type the word *PPU8* <cr>

Type in the current password which is *none* <cr>

Type in the new password which is *woodstock* <cr>

Confirm the new password by retyping the word *woodstock* <cr>

Password protection is now re-enabled.

## **Bug Fixes**

---

The following issues have been fixed in this version:

- Trim is now available if all automated items are set to Manual and faders only to Automated
- A Rollback marker is no longer created when an Aux Send is dropped into Replay using ALL REPLAY
- Audio routes from Madi Mezzanine cards 1 and 2 no longer interact with audio routed to from the 3rd and 4th Madi Mezzanine card to channel DSP cards 5-8
- The ProTools 0dB point now lines up correctly with the C300 fader scale
- Brings support for new Meter Graphics card firmware
- The front panel now updates correctly when moving many faders on a DAW layer
- Introduces support for any USB mouse. Requires new firmward on the 446 card - please contact your local SSL office for details.
- Deleting and then inserting a snapshot no longer causes a software crash
- Faders no longer drop into Absolute if the Routing Protection is set to Manual and the faders set to Automated and Use Trim
- Fixed phase error on first bus compressor
- Filters now operate correctly at 96kHz
- Signal is now routed from channels to all busses at 96kHz when dynamics are in circuit
- Issues with the console operation slowing down have been resolved
- If a channel has been protected using the fader status button, source routing is no longer possible.

## **Known Issue**

---

- Backing up a project with a colon (:) in the name will cause a crash



## Software Licence Agreement

Solid State Logic ('SSL') is willing to license this C300 software and accompanying documentation for this product (the 'Software') to the customer (the entity that purchased the product and software) on the condition that you read and accept all of the terms in this agreement. Please read the terms below carefully. By continuing to install the software and using the enclosed information to license the software you acknowledge that you have read and understood the agreement and agree to be bound by its terms and conditions. If you do not agree to these terms then do not open this package, discontinue the installation process and contact your local SSL representative for advice.

### Licence

SSL hereby grants you a non-exclusive licence to install and use the Software in machine-readable form on a single console. You may copy the software only for backup purposes, provided that you reproduce all copyright and other proprietary notices that are on the original copy of the Software.

### Restrictions

SSL retains the right, title and interest in and to the Software, and any rights not granted to you herein are reserved by SSL. You may not reverse engineer, disassemble, decompile, or translate the Software, or otherwise attempt to derive the source code for the Software, except to the extent allowed under applicable law. If applicable law permits such activities, any information so discovered must be promptly disclosed to SSL and shall be deemed to be the confidential proprietary information of SSL. Any attempt to transfer any of the rights, duties or obligations hereunder is void. You may not rent, lease, loan or resell for profit the Software, or any part thereof. You may not reproduce, distribute or create derivative works of the Software.

### Limitation of Liability

In no event will SSL or its suppliers be liable for profits or other consequential, incidental or special damages however arising, including negligence, in connection with the software or this agreement, even if SSL has been advised of the possibility of such damages. In no event will SSL's liability in connection with the Software, regardless of the form of action, exceed £100.

### Indemnity

You agree to defend and indemnify SSL against all claims, losses, liabilities, damages costs and expenses, including legal fees, which SSL may incur in connection with your breach of this Agreement.

### General

The Software is a commercial item. This Agreement is governed and interpreted in accordance with the laws of the United Kingdom.

